

# Theodore Roosevelt Medora Foundation

---



## MASTER PLAN

KRISTI HANSON'S 4TH YEAR  
ARCHITECTURE STUDIO 2022

Planned land uses and developments for Medora and the land around it. Images shown alongside descriptions for land use are our interpretation of style, scale, and building type for the planned land use.



# VIBRANT MEDORA

Vibrant Medora seeks to maintain and enhance the spirit of the west through the architectural experience of Medora. New housing, commercial, lodging, and entertainment venues aim to revitalize the appearance and function of the town, while creating a strong foundation for future growth. The design philosophy behind the new structures steers the town in a direction that preserves the aesthetic qualities of the old west, while embracing the amenities we have in the contemporary world.

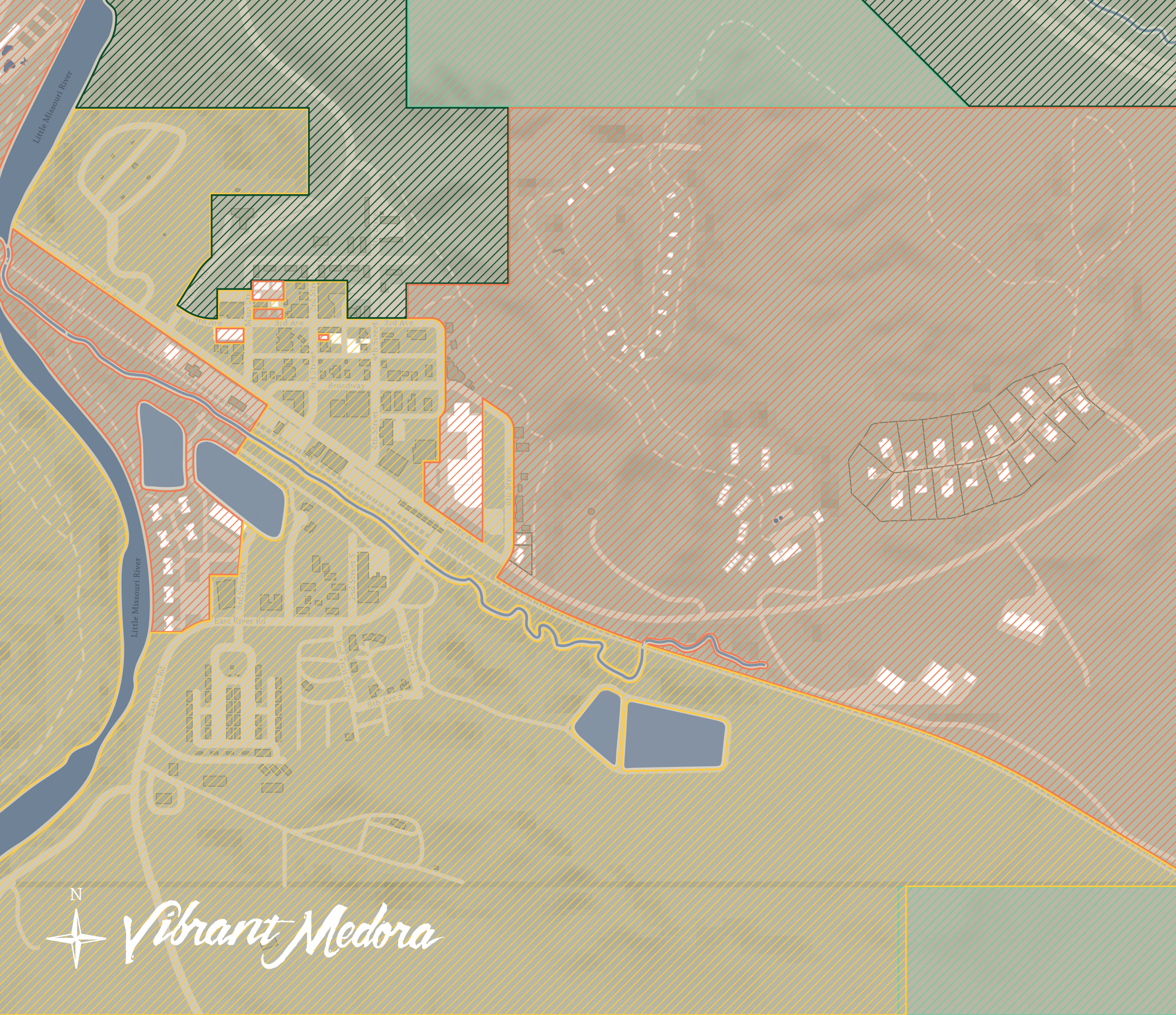







- PACIFIC AVENUE MIXED USE
- LOFTS IN THE VALLEY
- COUNTRY CONDOS
- THIRD STREET MIXED USE
- FLATS ON FOURTH
- OUTLAW'S HIDEAWAY  
FRONTIER INN & THE SADDLER
- HORSESHOE BEND
- MEDORA CORPORATE YARD
- MEDORA RIDING STABLES
- TRAILBLAZER RIDGE
- COTTAGES ON SIXTH
- QUEEN OF THE WEST THEATER
- LITTLE MISSOURI LOFTS
- RIVERSIDE COMMONS



# LAND OWNERSHIP MAP - VIBRANT MEDORA



## MAP LEGEND

-  Owned by TRMF
-  Owned by US Forest Service
-  Privately Owned
-  Owned by TRMF



# FLOOD PLAIN - VIBRANT MEDORA



## MAP LEGEND

 Flood Plain

# TYPOLOGIES - VIBRANT MEDORA



## MAP LEGEND

- Entertainment
- Commercial
- Hospitality
- Residential
- Mixed-Use







# HORSESHOE BEND

Named for the local western spirit and the winding curves of the Little Missouri, Horseshoe Bend is a newly proposed housing development settled on the Northeast side of Pacific Avenue. Nestled among the buttes, each home is given spectacular views, and is immersed in the beauty of its surroundings. When entering Medora, Horseshoe Bend will serve as a welcoming sight for visitors and provide much needed housing for local residents.





# TRAILBLAZER RIDGE

Trailblazer Ridge offers an extraordinary way of staying in Medora. The desire for variety in hospitality along with a camping atmosphere, close to trails, and ease of accessibility advanced the design to becoming a Hotel Villa complex. The location is just outside of town, and for that reason, the Trailblazer Ridge becomes its own miniature Medora community.







# OUTLAW'S HIDEAWAY

Outlaw's Hideaway serves as an adventurous getaway that reminds us of the wild spirit of the Old West. Situated atop the buttes overlooking Medora and the surrounding landscape, visitors can experience breathtaking sunsets, walks and horseback rides along the trails, and an evening campfire under the stars. Each unit is designed to make visitors feel immersed in the land and encourages them to get outside and experience all that Western North Dakota has to offer.







# COTTAGES ON SIXTH

Located across the street from Point to Point Park, the houses on 6th are two newly designed homes that are meant to pay homage to the existing style of Medora. With bright colors and welcoming front porches, these homes should fit right in with the Medora community and charming atmosphere.







# FRONTIER INN

To aid in the exponential growth in tourism that Medora can expect in the coming years, the Frontier Inn serves to lodge those guests with its 129 rooms, while also becoming a hub for food & fun with its attached Saddler Saloon & Grille, and links to the Queen of the West Theater and Point to Point Park. The hotel replaces the old Badlands Hotel property and rearranges the site in a way that links Point to Point Park and the new building properties seamlessly for pedestrians, while separating parked cars from these points of attraction to keep the focus on the people.







## QUEEN OF THE WEST

In order to extend the entertainment season to year round, the new Queen of the West Theater seats 750 and offers a complete entertainment experience. The face of the theater welcomes visitors into Medora as they enter town on Pacific Ave. The grand entrances from outside and from inside the hotel open up into an atrium with lounge space, concessions, dining areas, and exhibit areas to showcase props and information about Medora's history of entertaining.





# FLATS ON FOURTH

The new Flats on Fourth is a pair of buildings with a connecting courtyard built on the site of the current laundry facility. The buildings are split into 6 units designed for permanent workers and their families to reside. Family living was a driving force in this design so people can grow a family without a worry for space.





# LOFTS IN THE VALLEY

Located on the site of the old Girls Dorm, The Lofts in the Valley provides various types of permanent housing for year round workers. These units were designed in response to the projected worker increase with the upcoming Presidential Library project. To help further enhance the existing site, the neighboring park to the south has also been designed into a splash pad to help draw more visitors to the NW corner of town.





# 3RD STREET MIXED USE

DAKOTA BLUFFS TAPROOM & BREWERY - TEDDY'S  
GRAB 'N' GO - APARTMENTS AT 325

The Dakota Bluffs Taproom and Brewery serves as a new attraction in downtown Medora. Inspired by the recent rise in breweries, this new addition is a more modest and family friendly environment, serving as an extension of entertainment from the Gospel Brunch Plaza. Featuring a covered patio, rooftop seating, and Medora’s rustic charm, visitors and locals alike can enjoy regional brews and live music.





# PACIFIC AVENUE MIXED USE

MEDORA MARKETPLACE - BADLANDS BARBECUE  
- ROOSEVELT SUITE

The Medora Marketplace complex provides some much needed essentials to the Pacific Avenue food scene, housing market and grab-n-go style convenience. Situated on a large site, this accommodates outdoor markets, gatherings, live music and more. The indoor Medora Marketplace provides groceries and other home and kitchen essentials and the attached Badlands Barbeque introduces a western-style family friendly eatery. Who doesn't love a good BBQ? The upper level of the complex serves as suite-style housing for seasonal employees known as the Roosevelt Suites. These units allow tenants to stay close to the action and it's only a quick walk to all the necessities.







# COUNTRY CONDOS

Just steps away from the Cowboy Hall of Fame and the beloved Theodore Roosevelt National Park, the Country Condos provide luxurious living right on Main Street. Each unit has immense views of the surrounding buttes and the ability to let nature in on those warm and sunny days.





# LITTLE MISSOURI LOFTS

With spectacular views of the river and unique 1-2 bedroom units to choose from, the Little Missouri Lofts provides welcoming spaces to call home. Timber trusses and stone finishes capture the western spirit that Medora carries. Nearby is a connection to Point to Point trail, a great place for a scenic walk. With inviting spaces both inside and out, the Little Missouri Lofts offer something for everyone.

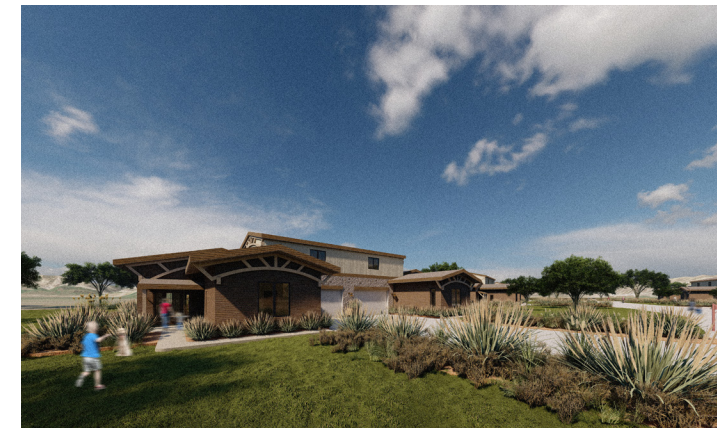






# RIVERSIDE COMMONS

Local residents deserve a comfortable place to call home that truly captures the feeling of Medora. Riverside Commons, a development of three bedroom duplexes alongside the Little Missouri River, does just that through open concepts, timber and stone finishes, and stunning views of the river.







# LEGACY BULLY PULPIT

The collective goal of Legacy Bully Pulpit is to blend our built community within the natural landscape, rather than dominating and contrasting with the landscape. Our goal is to bring vibrancy back to Legacy Bully Pulpit and to connect it back to the town of Medora. The stay at Legacy Bully Pulpit is experiential and highlights the landscape.





**BULLY CANYON BEER & WINE GARDEN**

**PRAIRIE CANYON PRIVATE RESIDENTIAL**

**DAVIS CREEK LODGE**

**DAVIS CREEK COMMONS**

**DAVIS CREEK CABINS**

**EATON ESTATES BARN VENUE**

**BISON MANOR PRIVATE RESIDENTIAL**

Bully Pulpit  
Reservoirs

Bully Pulpit  
Clubhouse

**BULLY PULPIT  
GOLF COURSE**

N





*Legacy Bully Pulpit*



# LAND OWNERSHIP - LEGACY BULLY PULPIT



## MAP LEGEND

-  Owned by TRMF
-  Owned by US Forest Service
-  Privately Owned
-  Owned by TRMF



# FLOOD PLAIN - LEGACY BULLY PULPIT

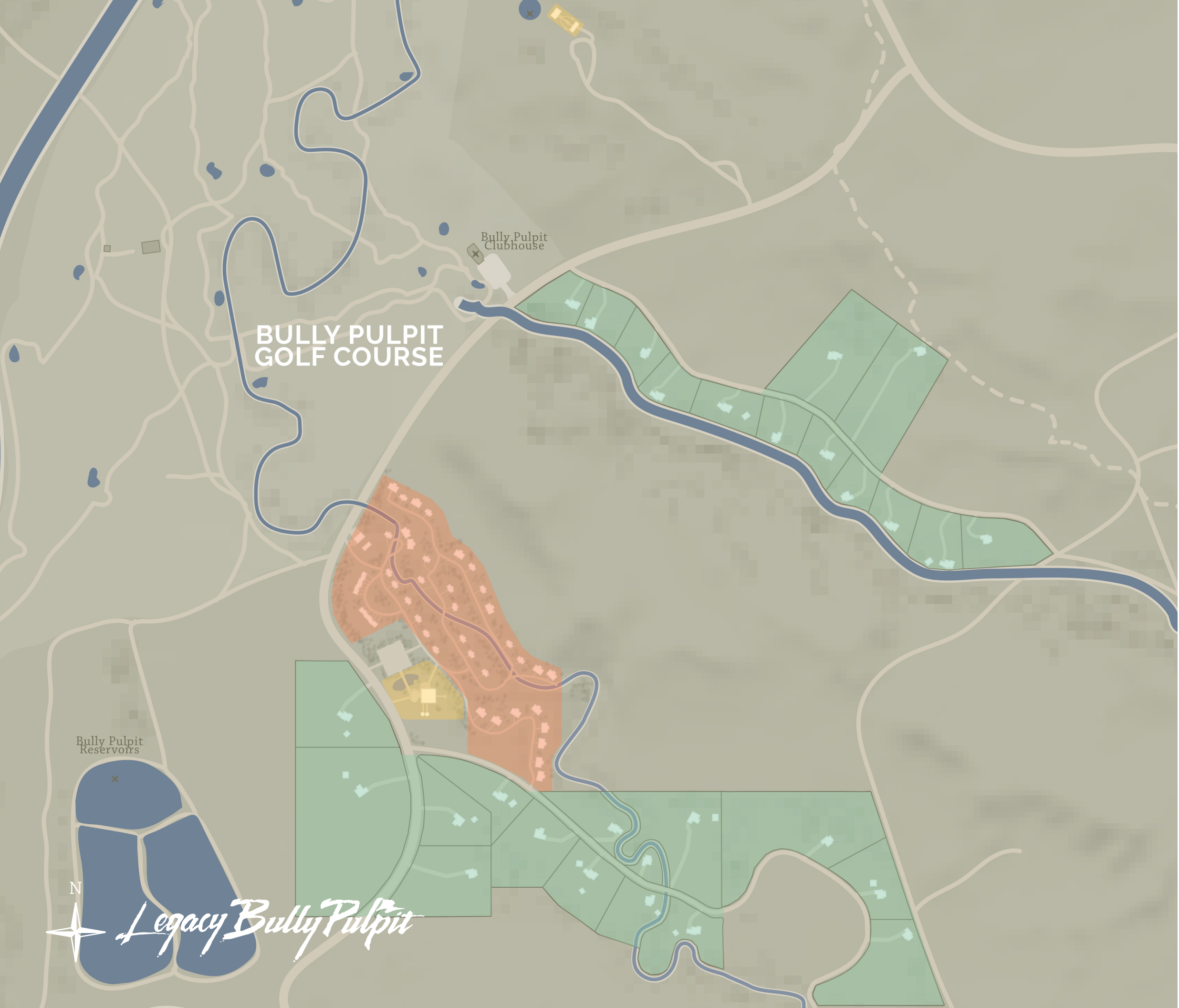


## MAP LEGEND

 Flood Plain



# TYPOLOGIES - LEGACY BULLY PULPIT



## MAP LEGEND

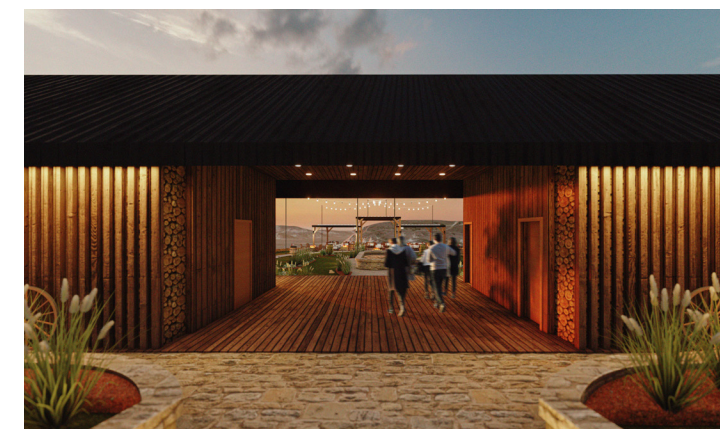
- Entertainment
- Commercial
- Hospitality
- Residential
- Mixed-Use





## BULLY CANYON BEER & WINE GARDEN

Inspired by Snohetta's Presidential Library design, the Bully Canyon Beer & Wine Garden strives to frame and preserve the beauty of Bully Canyon. Much like the Bully Pulpit Golf Course, the venue is primarily outdoor to create minimal interruption of the terrain. With views in mind, the simplistic form and western inspired materials create a luxurious wine and dine experience that offers the same feel as the golf course.





# BISON MANOR PRIVATE RESIDENTIAL

Traditional western meets modern country living with 28 new homes located south of Medora. These two new developments are split into seperate locations, both just minutes from the Bully Pulpit Golf Course. The private lots range from 1-7 acres, and are designed with accommodating families in mind, each home ranging from 3-5 bedrooms. The option to have a guesthouse, stable, or barn added to your design is a thoughtful rendition to enhance your true country living in the beautiful buttes of Medora.





# PRAIRIE CANYON PRIVATE RESIDENTIAL

Traditional western meets modern country living with 28 new homes located south of Medora. These two new developments are split into seperate locations, both just minutes from the Bully Pulpit Golf Course. The private lots range from 1-7 acres, and are designed with accommodating families in mind, each home ranging from 3-5 bedrooms. The option to have a guesthouse, stable, or barn added to your design is a thoughtful rendition to enhance your true country living in the beautiful buttes of Medora.







## DAVIS CREEK LODGE

Nestled among the cabins, the lodge becomes a central spot to socialize with other guests, store the golf carts for guests use, and get in a few shots with the golf simulator. Furthering down the road, Davis Creek Commons comes into view. These are secluded one bedroom cabins that allow a group to all come and enjoy their time while also having their own space at the end of the day. What sets this apart is the common area with fire pits and lawn games for guests to enjoy







# DAVIS CREEK COMMONS

Nestled among the cabins, the lodge becomes a central spot to socialize with other guests, store the golf carts for guests use, and get in a few shots with the golf simulator. Furthering down the road, Davis Creek Commons comes into view. These are secluded one bedroom cabins that allow a group to all come and enjoy their time while also having their own space at the end of the day. What sets this apart is the common area with fire pits and lawn games for guests to enjoy







## DAVIS CREEK CABINS

The Davis Creek Cabins provide luxury camping within close proximity to the golf course. Situated along the edge of the butte line, each unit offers scenic views and immerses the cabins in its surroundings. These cabins find the balance between the simplistic western style and a more contemporary country living to provide traditional but luxurious accommodations.







## EATON ESTATES BARN VENUE

The Eaton Estates Barn venue is a full service kitchen and bar that can serve corporate events, weddings, barn dances and more. Large enough to accommodate 150 guests, this venue features a pond area for photos, plenty of indoor and outdoor spaces for entertaining, and beautiful views of the buttes. With the surrounding landscape and nearby horses, any event is sure to have the western feel of Medora.







# WESTERN HERITAGE

The collective goal of Western Heritage is to create a space for positive, life-changing experiences that preserve, promote, and educate on the historical nature of the west. By providing a place for entertainment and competition this allows for unique western adventure. The western mantra strives upon Teddy Roosevelt's idea of a strenuous life; go outside, get dirty. A quote from Teddy himself states "Over, under, and through, but never around" an ideology that western heritage originates from, implementing in all aspects of design. At the focal point of our design lies the idea of an immersive experience into nature and challenging one to dirty their hands.





**HORSE STALLS & PASTURE**

**WARM UP ARENA**

**MEDORA FILLING STATION**

**MEDORA RODEO ARENA**

**LEGACY CENTER**

**OVERFLOW TRPL PARKING**

**MEDORA TOWN POOLS**

**CHAPS**

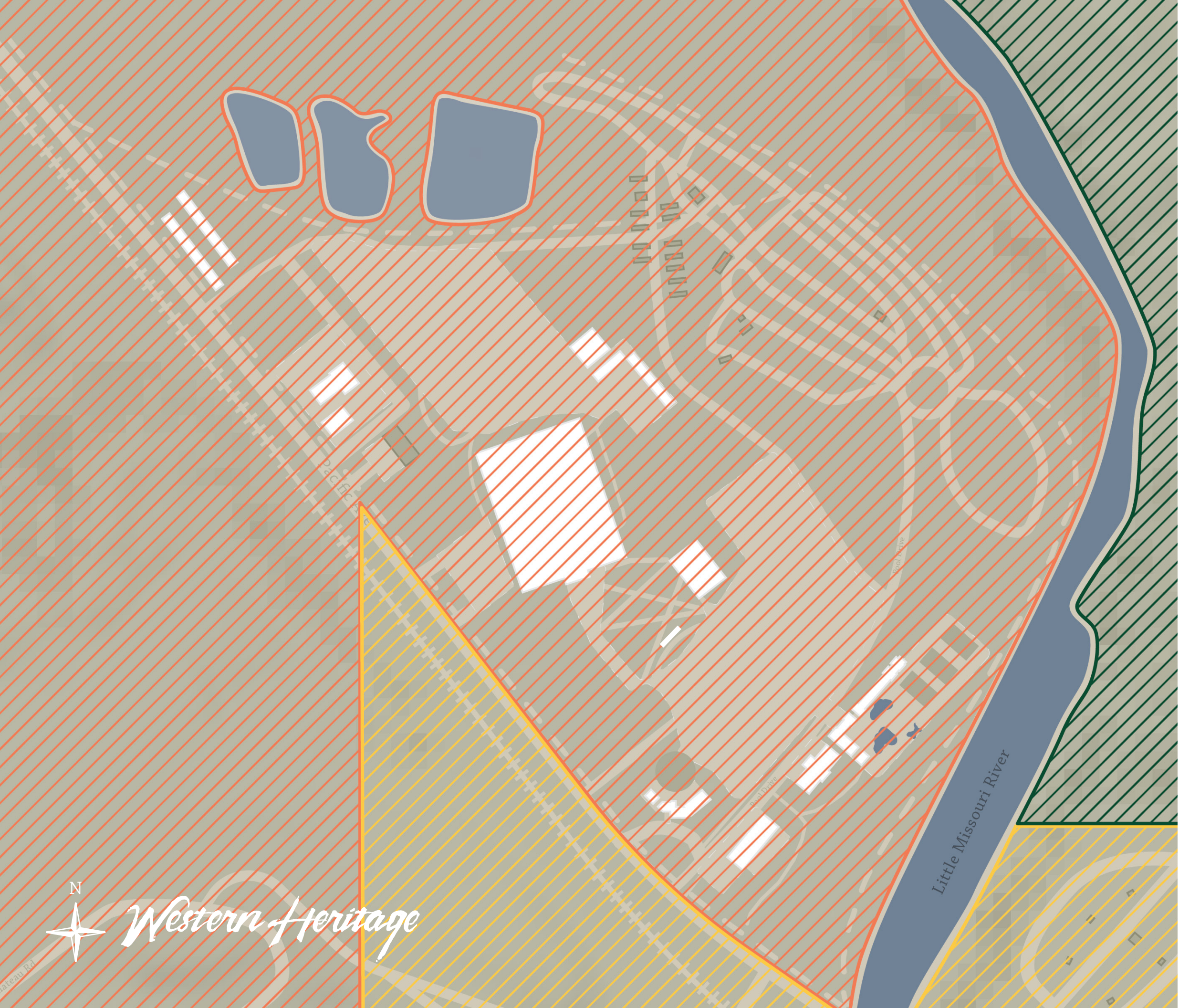
**THE HATHAWAY HOTEL**

**OUTFITTERS**





# LAND OWNERSHIP - WESTERN HERITAGE



## MAP LEGEND

- Owned by TRMF
- Owned by US Forest Service
- Privately Owned
- Owned by TRMF



# FLOOD PLAIN - WESTERN HERITAGE



## MAP LEGEND

 Flood Plain



ateau Rd



# TYPOLOGIES - WESTERN HERITAGE



## MAP LEGEND

- Entertainment
- Commercial
- Hospitality
- Residential
- Mixed-Use





# MEDORA RIDING STABLES

As a result of passion and vision this outdoor adventure has grown into a major tourist destination! The Medora Riding Stables has become so popular they average about 6500 rides during the current 3-month season. The newly established position of the horse stables and trail rides is meant to move the entire operation to a more convenient, less obtrusive environment, and popular view for the east entrance of Medora. There truly is nothing like this mesmerizing experience.







# MEDORA CORPORATE YARD

This community needs to have an adequate facility with practical proximity to the rest of town. The Laundry Facility was a major concern for the expansion of Medora. The Maintenance Barn has the capacity for storage of larger machinery and tools. This site can also function as a more permanent placement for the garbage warehouse.







## OUTFITTERS

Medora seeks for the reputation of world class outdoors. Whether it be Camping, Fishing, Kayaking, Biking, whatever you may find of interest, the Outfitter's is prepared to help. Here is where your next adventure begins.







# THE HATHAWAY HOTEL

Medora should have just as equal a design as the lovely Hathaway was known to be. The combination of need for lodging, beauty and charm easily turned into the typology to design a boutique hotel. This is the perfect option for those who may be less comfortable within a campsite and want a bit more luxury to stay alongside the western experience. Your stay here will be like none other.







## THE MEDORA TOWN POOLS

By obtaining this property, Medora can add some new qualities that haven't been able to be put in place thus far. First, the moved location opens opportunity for easier access into the rodeo grounds and now gets placed between the Hathaway Hotel and the expansion of the existing camping resort. The area can expand and can offer campers a bathroom facility if needed.







## CHAPS

We wanted Medora to have more than just another alternative restaurant, so we made the space an experience Medora hasn't seen yet. What makes Chaps special to Medora is the outdoor campfire patio. An exciting spot to dine during those hot summer nights under the stars and surrounded in beautiful Medora terrain.







## LEGACY CENTER

A crucial quota for Western Heritage design with education, history, and entertainment in mind. It houses a 200-seat theater and classrooms for large lecture periods or conferences. An interpretive center and museum for all Medora's treasured archives. Lastly, administration offices and lounge area.

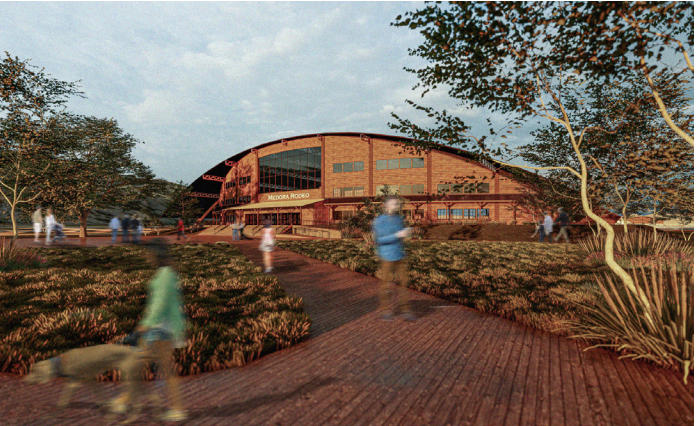




# MEDORA RODEO ARENA

The Code of the West

- 1. Live each day with courage
- 2. Take pride in your work
- 3. Always finish what you start
- 4. Do what has to be done
- 5. Be tough, but fair
- 6. When you make a promise, keep it
- 7. Ride for the brand
- 8. Talk less and say more
- 9. Remember that some things aren't for sale
- 10. Know where to draw the line







## FILLING STATION

We are taking the gas station out of the middle of town and relocating to the western edge of the Rodeo Grounds. With the additional land we are able to adapt to larger semi-trucks, horse trailers, boats, and even have the bonus of being less crowded compared to the middle of town. Attached is the convenience and liquor store. A one stop shop for any simple needs during your exploration of Medora.

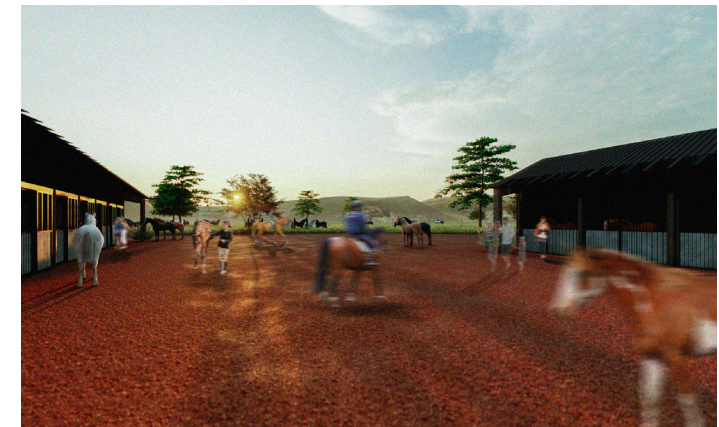






## HORSE STALLS & PASTURE

A dominating factor when coming to Medora is that scenic views are filled with the sights of horses and wildlife. We very much wanted the feeling of entering and exiting Medora to reminisce on the adventures and solitude moments. The stalls have been situated to follow this characteristic, as it is the first you see when coming in from the west.







*Thank you.*